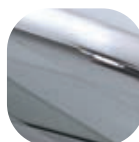


Letters A-F

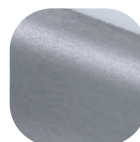


Features

- **Designed for Panel, Timber PVCu and Composite Doors**
Flexible use
- **Supplied with colour coordinated screws**
Perfectly matching hardware, even down to the smallest details
- **Classic design with a contemporary twist**
Create a elegant and stylish front door



Hardex
Chrome



Hardex
Graphite



White



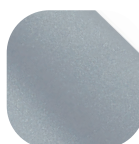
Hardex
Bronze



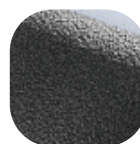
Hardex
Gold



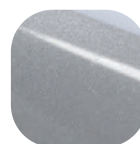
Black



Premium
Satin



Antique
Black



Silver

Letters A-F

Ordering Details

Letters A-F

Finish	Part No.					
	A	B	C	D	E	F
Hardex Chrome	4B004	4B054	4B104	4B154	4B204	4B254
Hardex Bronze	4B006	4B056	4B106	4B156	4B206	4B256
Hardex Gold	4B008	4B058	4B108	4B158	4B208	4B258
Hardex Graphite	4B012	4B062	4B112	4B162	4B212	4B262
Antique Black	4B009	4B059	4B109	4B159	4B209	4B259
White	4B000	4B050	4B100	4B150	4B200	4B250
Black	4B001	4B051	4B101	4B151	4B201	4B251
Silver	4B002	4B052	4B102	4B152	4B202	4B252
Premium Satin	DFNLTPS-A	DFNLTPS-B	DFNLTPS-C	DFNLTPS-D	DFNLTPS-E	DFNLTPS-F

Technical Information

Corrosion resistance

Meets the requirements of BS EN 1670 Grade 5 (480 hours)

Material Specification

Letters:	High quality Zinc
Coatings:	Hardex Chrome, Hardex Bronze, Hardex Gold, Hardex Graphite, Antique Black, Premium Satin, White and Silver
Screws:	Includes 2 X M3.5 x 25mm colour coordinated countersunk flat head screw

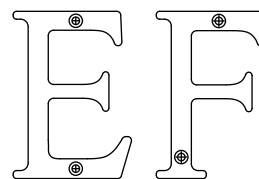
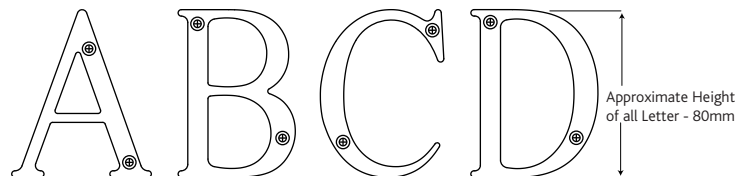
Maintenance

For continued protection of the quality finish and appearance, we advise routine cleaning of all our external hardware. We recommend wiping it with a clean cloth soaked in warm water and mild detergent every month. Please refrain from using heavy-duty cleaners, containing Chlorine or Potassium. Moving parts should also be lightly lubricated using a light non-acidic mineral oil (e.g., "3 in 1") at least twice per year. The product may need to be adjusted and fixings tightened to ensure a satisfactory operation. This procedure is particularly essential if products are used within a 25-mile radius of coastal areas or close proximity to building sites or large industrial areas, where more frequent cleaning may be required to prevent the accumulation of corrosive contaminants.

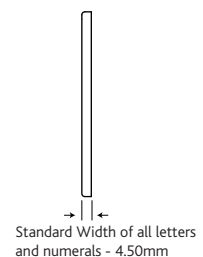
Packaging

Letters

Individually bagged with screws and care instructions.
10 in an outer box.



2 x Screws Provided Per Letter



All dimensions are in mm and are nominal.
Fab&Fix reserves the right to change specification without notice.
It is the responsibility of the door manufacturer to ensure that the finished product meets any required safety and performance specification.