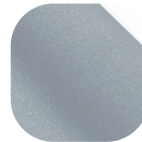


Sash Pull Handle



Features

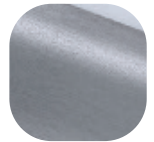
- **Sturdy feel**
Solid die cast zinc construction
- **Easy to grip**
Sculptured ergonomic design
- **Perfectly matching hardware**
Supplied with colour coordinated screws that perfectly matches to the Sash Pull Handle
- **Designed for PVCu, Timber and Aluminium sliding windows**
To suit all window materials, we have a range of different keeps to suit specific profiles
- **Available in the complete range of Hardex finishes**
Perfectly matching to the full Fab&Fix range of products



Premium
Satin



Hardex
Chrome



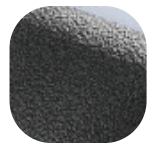
Hardex
Graphite



Hardex
Bronze



Hardex
Gold



Antique
Black



Hardex
Pewter



White



Black

Sash Pull Handle

Ordering Details

Product

Finish	Part No.
Hardex Chrome	VHBHHC01
Hardex Bronze	VHBHHB01
Hardex Gold	VBHHG01
Hardex Graphite	VBHGRO1
Hardex Pewter	VVBHPT01
Antique Black	VVBHAB01
White	VVBHWH01
Black	VVBHBK01
Premium Satin	VVBHPS01

Technical Information

Corrosion Resistance

Meets the requirements of BS EN 1670:2007 Grade 5 (480 hours)

Material Specification

Sash Pull Handle:	Zinc Die Cast
Coatings:	Hardex Chrome, Hardex Bronze, Hardex Gold, Hardex Pewter, Antique Black, Hardex Graphite, Premium Satin, White and Black.

Maintenance

For continued protection of the quality finish and appearance, we advise routine cleaning of all our external hardware. We recommend wiping it with a clean cloth soaked in warm water and mild detergent every month. Please refrain from using heavy-duty cleaners, containing Chlorine or Potassium. Moving parts should also be lightly lubricated using a light non-acidic mineral oil (e.g., "3 in 1") at least twice per year. The product may need to be adjusted and fixings tightened to ensure a satisfactory operation. This procedure is particularly essential if products are used within a 25-mile radius of coastal areas or close proximity to building sites or large industrial areas, where more frequent cleaning may be required to prevent the accumulation of corrosive contaminants.

Packaging

Sash Pull Handle: Individually bagged, 100 per box

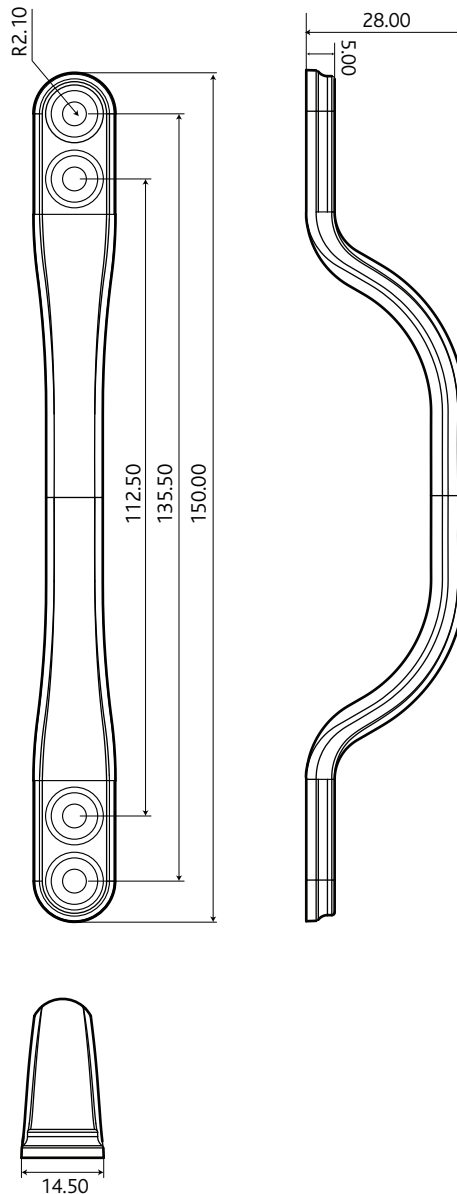


Diagram not to scale.

All dimensions are in mm and are nominal.

Fab&Fix reserves the right to change specification without notice. It is the responsibility of the window manufacturer to ensure that the finished product meets any required safety and performance specification.