

DFNED

Decorative Door Numerals and Letters

Fitting Instructions

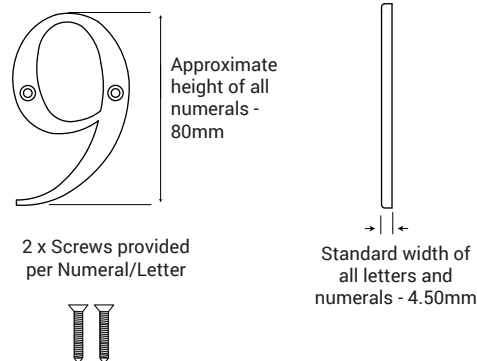
Installing a Decorative Numeral or Letter

To fit a door handle you will require the following tools:

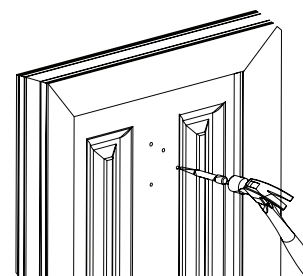
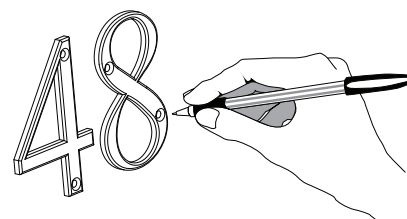
- Pencil
- Tape Measure
- Screwdriver
- Drill and Drill bits

Caution

This numeral/letter fits to the door profile using face fixing screws. Please use a tape measure / rule and square to correctly position on the door. Please check the numeral or letter is in the desired location before marking any holes.

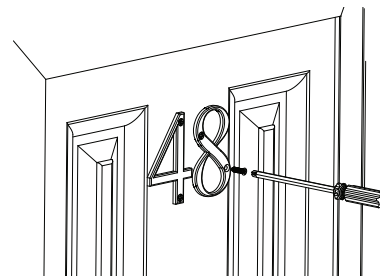


- A** Locate the numerals/letters on the door, using a straight edge if necessary to ensure alignment.
- B** With the numerals/letters correctly located mark the fixing holes with a pen or pencil. Then remove the numerals/letters.
- C** If available always use a drill punch to mark drilling positions using the pencil marks as a guide. The indent made by the point will ensure the drill does not slip.
- D** If fitting to PVCu profile, use a 2mm drill bit to pre-drill the fixing holes ensuring the drill bit pierces the steel reinforcement. If fitting to timber drill to a maximum depth of 15mm.
- E** Align the numerals/letters with the correct fixing hole location. Screw into place with a screwdriver and the fixing screws provided.

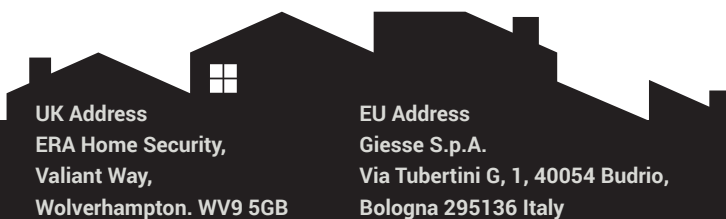


Additional Information

Maintenance - Numerals/letters should be cleaned with a soft dry cloth. If further cleaning is required we recommend a mild solution of warm, soapy water on a soft cloth. Dry thoroughly afterwards.



All dimensions are in mm and are nominal.
ERA reserves the right to change specification without notice. It is the responsibility of the door manufacturer to ensure that the finished product meets any required safety and performance specification.



UK Address
ERA Home Security,
Valiant Way,
Wolverhampton. WV9 5GB

EU Address
Giese S.p.A.
Via Tubertini G, 1, 40054 Budrio,
Bologna 295136 Italy

Version 1.0 Issue Date: March 2026

TECHNICAL HELPLINE

For more info call
01922 490000 or visit
eraeverywhere.com

01922 490 050